

40 JAAR  
**CLEVERS**  
*om van te smelten*



**SINDS 1985**





## DID YOU KNOW

takeover chip shop



1985

... Clevers is celebrating its **40th anniversary** this year?

... we have entered into a nice partnership with **Wealer** since this year?

... as of this year our terraces are **smoke-free**?

... you can also compose a **vegancoupe** if you would like to?

... we offer you a combi deal with the **world-famous Biscoff®** biscuit?

... you can **customise your coupe**? (This may result in a price change.)

... you can also easily order yourself via the **QR code on the table**?

... the **allergens overview** is at the back of our menu? More info? Ask one of our staff.

# 40 YEARS OF CLEVERS

Welcome to our anniversary year.

This festive year, let our enthusiastic team surprise and pamper you again, discover old and new creations and enjoy our original actions.

We are ready for it, are you?

*Enjoy all the goodies!  
Team Clevers*



# COMBI-DEALS



## COMBI-DEALS | 9,75

combine a hot drink (coffee, cappuccino, latte macchiato, latte, tea or hot chocolate) with an ice cream cake:

+ **zomertiramisu** vanilla and strawberry ice cream, fresh strawberries (in season), white chocolate sauce, meringue, long fingers, Clevers strawberry licorette and whipped cream

+ **hazelnoot praliné** hazelnut praliné ice cream, portion of vanilla soft serve ice cream, hazel-nuts, hazelnut crispies, Nutella and whipped cream

+ **hemels moddertje** vanilla and cookie ice cream, Limburg knapkoekcrunch, mocha foam, Belgian chocolate mousse and whipped cream

+ **monchou** yoghurt and yoghurt forest fruit ice cream, Bastogne crunch, cherries and whipped cream

+ **progres** vanilla and hazelnut ice cream, mocha foam, hazelnut crunch and whipped cream

+ **speculoos** speculoos ice cream and vanilla soft ice cream, Biscoff® speculoos topping, Biscoff® biscuits and whipped cream

+ **notenmix** truffle and hazelnut ice cream, chocolate sauce, Clevers nut mix and whipped cream





*New!*

# CHILDREN'S COUPES

first price ice cream test  
aw goes  
1996  
Agemeen Dagblad

*New!*



◀ **apenko(e)p** | 5,25

*turn into a monkey...*

1 scoop of ice cream or 1 portion of vanilla soft-serve ice cream or frozen yogurt, Oreo crunch, fresh banana, banana slices, Apekop candy and whipped cream *New!*

**glitter glamour** | 5,25

*feel like a star for a moment...*

1 scoop ice cream or 1 portion of vanilla soft-serve ice cream or frozen yogurt, glitter glamour mix, candy necklace, lollipop and whipped cream

**dolle donut** | 5,50

*how crazy are you?*

1 scoop ice cream or 1 portion of vanilla soft-serve ice cream or frozen yogurt, mini-donut, sour mat, smarties, lollipop and whipped cream

**super spooky** | 5,25

*creepily delicious, brrrrr...*

1 scoop ice cream or 1 portion of vanilla soft-serve ice cream or frozen yogurt, Oreo crunch, ghosts and monster, lollipop and whipped cream

**kreezie kikker** | 4,95

*eat quickly before they jump away...*

1 scoop ice cream or 1 portion of vanilla soft-serve ice cream or frozen yogurt, frogs, sour mats, disco dip, lollipop and whipped cream

**pi-pa-pannenkoek** | 5,25

*yummy with nutella*

1 scoop ice cream or 1 portion of vanilla soft-serve ice cream or frozen yogurt, pancake, Nutella, smarties, lollipop and whipped

# FROZEN YOGURT

## COUPES

### FROZEN YOGURT

**noot** | 7,50

frozen yogurt with Clevers nut mix and honey topping

**aardbei** | 7,50

frozen yogurt with fresh strawberries (in season)

**fruit** | 7,75

frozen yogurt with mixed fresh fruit

**sorbet** | 6,95

frozen yogurt with sauce of your choice and whipped cream



### FROZEN YOGURT WITH WARM FRUIT

**warme frambozen** | 7,75

frozen yogurt with warm raspberries

**warme kersen** | 7,15

frozen yogurt with warm cherries

**warme bosvruchten** | 7,75

frozen yogurt with warm forest fruits in syrup







**2000**

*ice cream parlour of the year*



# CHOCO/NOOT

## COUPES



*first expansion*

Ussalon Clevers nu ook  
aan Raadhuisplein Arceen

**2001**



**after eight** | 10,90

vanilla and stracciatella ice cream, hot chocolate dip, After Eight chocolates and whipped cream

**chocofantasie** | 12,50

vanilla, chocolate and stracciatella ice cream, Belgian chocolate mousse, brownie and whipped cream

**dame blanche** | 8,35

vanilla and stracciatella ice cream, hot chocolate sauce and whipped cream

**dame noir** | 8,35

chocolate and stracciatella ice cream, hot white chocolate sauce and whipped cream

**hazelnootkrokant** | 9,25

vanilla, hazelnut and hazelnut praline ice cream, mocha sauce, hazelnut crisps and whipped cream

**karamello** | 9,25

vanilla, caramel, chocolate and crocantino ice cream, hot caramel sauce and whipped cream

**notenbalk** | 10,50

walnut, hazelnut, hazelnut praline and truffle ice cream, Clevers nut mix and whipped cream

**nougatina** | 9,25

vanilla, caramel, crocantino and hazelnut ice cream, caramel sauce, caramelised sugar and whipped cream

**pinda rock** | 8,95

vanilla soft ice cream, hazelnut praline ice cream, chocolate sauce, peanut brittle and whipped cream

**EVEN MORE**

## **CHOCO/NUT COUPES**

**pistachecrunch** | 8,75

white chocolate pistachio, chocolate and vanilla ice cream, angel hair, ▶  
pistachio topping and whipped cream *New!*

**punaise** | 16,75

hazelnut, walnut, cookie, hazelnut praline, chocolate, stracciatella and  
truffle ice cream, Clevers nut mix and whipped cream

**stracciatella** | 9,25

vanilla and stracciatella ice cream, chocolate sauce and whipped cream

**tartufo** | 9,40

vanilla, hazelnut praline, truffle and chocolate ice cream, chocolate sau-  
ce, hazelnut crumbles and whipped cream

**cheezie karamel** | 9,25

chocolate and crocantino ice cream, cheesecake 'New York style', white  
chocolate sauce, caramel sauce, Bastogne crunch and whipped cream

**salty rock** | 8,95

vanilla soft-serve ice cream, coffee ice cream, caramel sauce, salty pe-  
anut brittle and whipped cream

**vanilledroom** | 8,35

vanilla and chocolate ice cream, hot vanilla sauce and whipped cream

**progrescoupe** | 9,35

vanilla, hazelnut and coffee ice cream, mocha sauce, mocha foam,  
hazelnut crunch and whipped cream

#1 best ice cream parlour Algemeen Dagblad  
Ijs is (soort)  
2004



New!

**FRUIT**

**COUPES**

**aardbeiencoupe** | 12,25

vanilla and strawberry ice cream, strawberry sauce, fresh strawberries (in season) and whipped cream

**say cheese** | 12,95

yoghurt forest fruit and red fruit ice cream, cheesecake 'New York style', white chocolate sauce, blueberry sauce, fresh strawberries (in season), Limburg knapweed crunch and whipped cream

**zomercoupe** | 12,25

vanilla and red fruit ice cream, fresh strawberries (in season), forest fruit in syrup and whipped cream

**vruchtencoupe** | 12,75

vanilla, strawberry, mango and banana ice cream, strawberry sauce, mixed fresh fruit and whipped cream

**ananas royaal** | 10,25

vanilla, passion fruit and mango ice cream, pineapple sauce, fresh pineapple and whipped cream

ice cream parlour of the year



**2007**



## **COUPES WITH WARM FRUIT**

**cerise** | 10,25

vanilla and amarena ice cream, hot cherries and whipped cream

**warme framboos** | 10,95

vanilla, lemon and raspberry ice cream, hot raspberries and whipped cream

**warme bosvruchten** | 10,95

vanilla, red fruit, raspberry and amarena ice cream, hot forest fruits in syrup and whipped cream

# EVEN MORE FRUIT COUPES

Clevers continues to expand



2007

## **amarena** | 10,95

vanilla and amarena ice cream, amarena cherries in syrup and whipped cream

## **bosvruchten** | 10,75

vanilla, red fruit, raspberry and amarena ice cream, forest fruit in syrup and whipped cream

## **bananensplit** | 9,25

vanilla, banana and strawberry ice cream, strawberry and banana sauce, fresh banana and whipped cream

## **banaan royaal** | 9,25

vanilla, banana and truffle ice cream, chocolate and banana sauce, fresh banana and whipped cream







▲ **lovely lemon** | 9,95

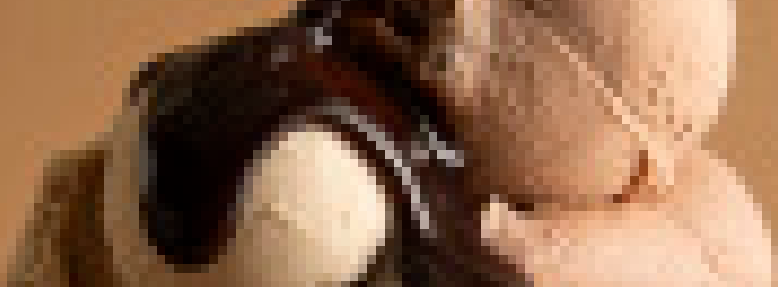
lemon and yoghurt ice cream, lemon curd, pistachio crunch, long finger and whipped cream

**tropical** | 12,75

Passion fruit, lemon, strawberry, mango and raspberry ice cream, fresh pineapple, fresh melon, fresh kiwi and whipped cream

**zumpel** | 16,75

vanilla, banana, red fruit, mango, raspberry, stracciatella and truffle ice cream, mixed fresh fruit and whipped cream



**ice cold summer** | 8,50

red fruit and lemon ice cream, long fingers, forest fruits in syrup, fresh strawberries (in season) and whipped cream

**choco monkey** | 7,95

cookie ice cream, vanilla soft-serve ice cream, chocolate sauce, fresh banana and whipped cream

**otti biscotti** | 8,10

crocantino ice cream, vanilla soft-serve ice cream, caramel sauce, Bastogne crunch and whipped cream

**black biscotti** | 7,95

dark cookie ice cream, vanilla soft-serve ice cream, chocolate sauce, Oreo crunch and whipped cream

**Limburgse knapcoupe** | 8,25

dark cookie ice cream, vanilla soft ice cream, chocolate dip, Limburg knapweed crunch and whipped cream

**mokkamo** | 8,20

stracciatella, cinnamon and crocantino ice cream, caramel sauce, mocha fudge and whipped cream

**don vito** | 9,75

vanilla, raspberry and don vino ice cream, chocolate dip, raspberry sauce, meringue and whipped cream

# SLIGHTLY SMALLER COUPES

## **crunchy banana** | 7,95

caramel and banana ice cream, caramel sauce, fresh banana, hazelnut crunch and whipped cream

## **tre dito** | 8,25

coffee, stracciatella and crocantino ice cream, mocha sauce, ladyfingers and whipped cream

## ▼ **sweet walnut** | 8,35

walnut ice cream, frozen yogurt, caramel sauce, caramelised walnuts and whipped cream



newly built ice kitchen

**2010**





## NOW ALSO IN HEYTHUYSEN

Rowena Kroon-Dickhoff is the new franchisee of ice cream parlour Clevers Heythuysen, located in the heart of Leudal municipality. Ever since the ice cream parlour opened in Kessel, Rowena has been a familiar face. 'It was time for a new challenge in 'Klein Parijs', as Heythuysen is also called. The Clevers Group gave me this opportunity, so I grabbed it with both hands.

'At Clevers, there is always room for people who would like to develop further. Bram van den Munckhof, who has been with us for many years, will accompany her on this wonderful journey. Together with her new team, she will warmly welcome you at ice cream parlour Clevers Heythuysen from spring 2025 for an ice-cold pampering moment. 'Preuf Heitse!'

# 40 YEARS OF CLEVERS TO MELT FROM

In 1985, a sweet adventure began in Grubbenvorst. Theo and Mill Clevers took over Theo's parents' friture, which served soft-serve ice cream in addition to fries. But their dream extended further. They added Schöller scoop ice cream and introduced a small, tasty ice cream menu.

Yet there remained a desire for more: in 1989 they decided to focus entirely on artisanal scoop ice cream in addition to soft ice cream and the friture disappeared. A bold move, but it turned out to be a hit. More and more people came to Grubbenvorst - on foot, by bike or by car - to taste that special ice cream.

The quality was soon noticed. Clevers won several awards, including the Algemeen Dagblad's national ice cream test and the title Ice Cream Parlour of the Year. In 2000, a second outlet opened in Arcen and in 2001 it became the first franchise outlet.

In 2020, Theo and Mill handed over the business to Joris Stappers and Tom Vaessen, two employees from the very beginning. Clevers continues to grow, also in retail and now Clevers ice cream is available at more than 150 outlets.

What has always remained are the values with which it once started: artisanal quality, warm service and hospitality.

40 years later, Clevers is still the place for a moment of pure enjoyment - to melt from!



# karatella-Wealercoupe | 8,95

stracciatella and caramel ice cream, vanilla soft serve, chocolate dip, caramel sauce and whipped cream

New!





## WEALER X CLEVERS LIMBURG PRIDE

Together towards a tasteful experience!

Two proud Limburg brands have entered into a collaboration.

This has resulted in a tasteful creation: the Karatella-Wealercoupe. This cooperation reinforces the brand values of both companies: entrepreneurship, quality, innovation, connection and convenience.

Because mobility is not something everyone can take for granted, we donate € 0.25 of every Karatella-Wealercoupe sold to the Princess Beatrix Muscle Fund.

## YOGURT COUPES

pop-up ice cream parlour Floriade

**FLORIADE**  
VENLO 2012  
LIVING NATURE

**2012**

### yoghurt fruit | 12,75

yoghurt, yoghurt forest fruit and yoghurt strawberry ice cream, frozen yogurt, raspberry sauce, mixed fresh fruit and whipped cream

### yoghurt aardbei | 12,25

yoghurt and yoghurt-strawberry ice cream, frozen yogurt, strawberry sauce, fresh strawberries (in season) and whipped cream

### yoghurt bosvruchten | 10,75

yoghurt, yoghurt forest fruit and yoghurt strawberry ice cream, frozen yogurt, forest fruit in syrup and whipped cream

## YOGHURT WITH WARM FRUIT

### yoghurt warme bosvruchten | 10,95

yoghurt, yoghurt forest fruit and yoghurt strawberry ice cream, frozen yogurt, warm forest fruit in syrup and whipped cream

### yoghurt framboos | 10,95

yoghurt, yoghurt forest fruit and yoghurt strawberry ice cream, frozen yogurt, hot raspberries and whipped cream

### yoghurt cerise | 10,25

yoghurt, yoghurt forest fruit and yoghurt strawberry ice cream, frozen yogurt, hot cherries and whipped cream





## YOGHURT WITH LIQUORETTE

### **yoghurt riva** | 11,75

yoghurt, yoghurt-strawberry and yoghurt-strawberry ice cream, frozen yogurt, Sprite, Clevers blue-likorette and whipped cream

### **yoghurt exotica** | 15,50

yoghurt, yoghurt forest fruit and yoghurt strawberry ice cream, frozen yogurt, cold-pressed fresh orange juice, Clevers passion likorette, mixed fresh fruit, fresh pineapple and whipped cream

### **yoghurt pisang** | 13,50

yoghurt, yoghurt forest fruit and yoghurt strawberry ice cream, frozen yogurt, cold-pressed fresh orange juice, Clevers pisang likorette, fresh banana and whipped cream



**CLEVERS  
CLASSIC!**

**softijssorbet | 6,95**

vanilla soft ice cream, sauce of your choice and whipped cream

What started with the sale of soft ice cream through a window on the Lottumseweg in Grubbenvorst, was continued in 1985 by Theo and Mill Clevers in their friture ice cream parlour. In addition to the home-made fries that were sold, Clevers soft ice cream was served here for the first time on the terrace in an ice cream coupe: the one and only Clevers soft ice sorbet.

To this day, the same recipe is still used for the soft ice cream as 40 years ago. A true Clevers Classic!

# SPECIAL COUPES

acquisition Clevers Joris en Tom



2020

## chocoladefondue | 12,95

Cookies, banana and mango ice cream, marshmallows, fresh fruit combined with Nutella: dip it!

## cookie monster | 12,95

vanilla, cookie and caramel ice cream, white chocolate sauce, Belgian chocolate mousse, 3 kinds of cookie crunch (Bastogne crunch, Oreo crunch and Limburg knapkoekcrunch) and whipped cream

## ijsspektakel | 32,50

grandiose large ice cream of your choice: fruit ice cream with different fruit toppings, chocolate and nutty ice cream with different chocolate and nut toppings or a combination of both

## arretjescoupe | 9,25

crocantino and truffle ice cream, caramel sauce, arretjes cake and whipped cream

## parel aan de Maas | 10,95

vanilla, truffle and amarena ice cream, amarena cherries in syrup and whipped cream

## browniepannetje | 8,60

vanilla and crocantino ice cream, Nutella, brownie, icing sugar and whipped cream

## Limburgs weckpotje | 9,85

vanilla and cinnamon ice cream, cherries and whipped cream

## café glacé | 10,25

vanilla and coffee ice cream in hot coffee and whipped cream

**riva** | 11,75

vanilla and lemon ice cream, Sprite, Clevers blue-likorette and whipped cream

**aardbei advocaat** | 13,10

vanilla and strawberry ice cream, fresh strawberries (in season), egg-nog and whipped cream

**schwarzwaldler kirsch** | 11,95

vanilla, truffle and amarena ice cream, hot cherries, Clevers cherry liqueur and whipped cream

**exotica** | 15,50

banana, mango, lemon and raspberry ice cream, cold-pressed fresh orange juice, Clevers passion liqueur, mixed fresh fruit, fresh pineapple and whipped cream

**passion** | 9,15

lemon, passion fruit and mango ice cream with Clevers passion liqueur and whipped cream

**pisang** | 13,50

vanilla and banana ice cream, cold-pressed fresh orange juice, Clevers pisang liqueur, fresh banana and whipped cream



# COUPES WITH LIQOURETE



## COUPES MET LIQOURETTE CHOCO/NUT

### notenkraker | 11,50

walnut, hazelnut, hazelnut praline and truffle ice cream, Clevers nut mix, Clevers coffee liqueur and whipped cream

### advocata | 11,05

vanilla ice cream, chocolate sauce, eggnog and whipped cream

### boerenjongens | 12,25

vanilla, malaga and coffee ice cream, farmboys, Clevers coffee liqueur and whipped cream

### Harrie | 12,25

vanilla, malaga and coffee ice cream, farmboys, eggnog and whipped cream

### brasil | 14,05

vanilla, coffee, hazelnut praline, truffle and banana ice cream, Clevers coffee liqueur, fresh banana, Clevers nut mix and whipped cream

### amaretto | 10,80

vanilla, coffee, hazelnut and hazelnut praline ice cream, macaroons, Clevers amaretto liqueur and whipped cream

## ICE CREAM per scoop | 2,00

strawberry	raspberry	passion fruit	white chocolate pistachio
amarena	hazelnut	red fruit	yoghurt strawberry
banana	praline	smurf	yoghurt forest fruit
chocolate	cinnamon	speculoos	sugar-free strawberry
lemon	caramel coffee	stracciatella	sugar-free hazelnut
cookies	malaga	truffle	sugar-free chocolate
crocantino	mango	vanilla	
don vito		walnut	

\*special flavours are variable, see showcase!

## SOFT ICE CREAM per portion

vanilla soft ice cream | 1,60

frozen yogurt | 1,60

\*different prices apply for vanilla soft ice cream or frozen yogurt in a cup or cone

## SAUCES

strawberry sauce 0,90	mocha sauce 0,90
pineapple saus 0,90	cherry sauce 0,90
blueberry sauce 0,90	lemon curd 1,50
banana sauce 0,90	pistachio topping 1,50
rasberry sauce 0,90	Biscoff® topping 1,95

## COLD OR WARM

chocolate sauce*	0,90
vanilla sauce*	0,90
white chocolate sauce*	0,90
caramel sauce*	0,90

\*saus warm? + 0,10

## CLEVERS LIQOURETTE & ALCOHOL small can 4cl | 2,85

coffee	passion	blue	strawberry
amaretto	whiskey	pisang	boerenjongens
cherry	Grand Marnier	advocaat	tea

# MAKE YOUR OWN

## COUPE

### FRUIT AND MORE

fresh strawberries (in season) | 2,95  
fresh pineapple per portion | 0,60  
fresh kiwi per piece | 1,55  
fresh melon by slice | 0,95  
fresh banana per piece | 1,50  
Clevers nutmix portion | 2,85  
mixed fresh fruit portion | 3,25  
amarena-cherries portion | 2,65

forest fruit mix portie | 2,75  
warme forest fruit mix portion | 2,95  
warm raspberry portion | 2,95  
warme cherry portion | 2,35  
chocomousse portion | 2,75  
brownie piece | 2,75  
arretjescake | 3,75

### GARNISH per piece/portion

whipped cream | 1,10  
mocha meringue | 0,25  
hazelnut crisps | 0,60  
peanut brittle | 2,95  
salted caramel brittle | 2,95  
caramelized walnuts | 2,50  
disco dip | 0,50  
can of chocolate dip | 0,95  
Bastogne crunch | 0,80  
Limburgse knapkoekcrunch | 1,65  
mini donut | 0,95  
Nutella | 1,50  
Biscoff® crunch | 0,90  
pistachio crunch | 0,85  
Oreo crunch | 1,15  
Belgium chocolate | 2,75  
sugar eyes | 0,30

2 biscuits and chocolate | 1,00  
white chocolate shavings | 0,75  
dark chocolate shavings | 0,90  
caramelized sugar | 0,60  
lady finger | 0,20  
macaroon | 0,25  
marshmallow | 0,25  
After Eight chocolate | 0,55  
meringue drops | 1,10  
bonbon | 0,90  
Smarties | 0,80  
sour mats per piece | 0,35  
frog per piece | 0,25  
glitter glamour mix | 1,95  
little banana | 0,20  
Apekop | 0,25  
lollipop | 0,55

# SHAKES & SMOOTHIES

**milkshake** 350ml | 4,75 - 550 ml | 5,95

choice of: strawberry, pineapple, banana, blueberry, chocolate, raspberry, caramel, cherry, mocha, vanilla and white chocolate

*Mix of fresh fruit, fruit juice and ice cream!*

## SMOOTHIES

**smoothie orange boost** 350ml | 8,75 - 550 ml | 10,75

yoghurt ice cream, fresh banana, fresh strawberries (in season) and cold-pressed fresh orange juice

**smoothie mango** 350ml | 7,95 - 550 ml | 9,95

mango and yoghurt ice cream, fresh banana and cold-pressed fresh orange juice







## ICE COFFEE

ice coffee | 5,75

ice coffee caramel | 6,25

ice coffee hazelnut | 6,25

even tastier with whipped cream! | + 1,10

**4C** JAAR  
**CLEVERS**  
AMSTERDAM

**2025**



**affogato** | 5,50  
vanilla ice cream, shot  
of espresso and amaretto  
crunch

## DRANKEN

### COLD DRINKS

Coca-Cola	2,80	Fuze tea	3,25
Coca-Cola Zero	2,80	sparkling, green, mango chamomile	
Fanta Zero	2,80	'coldpressed' fresh orange juice glass	3,95
Sprite	2,80	Hertog Jan beer	3,50
still water	2,60	Hertog Jan weizener	4,10
sparkling water	2,60	La Trappe blond	5,25
bitter lemon	2,80	La Trappe dubbel	5,25
cassis	2,80	Amstel Radler 0.0	3,50
ginger ale	2,80	Liefmans fruitesse	4,25
Rivella	2,90	white wine Chardonnay	6,95
tonic	2,80	0,25ltr bottle	
apple juice cloudy	2,25		
Chocomel glass	2,25		
milk glass	2,00		

◀ affogato	5,50
espresso	2,95
double espresso	3,70
flat white	4,40
lungo	2,95
coffee	2,95
cappuccino	3,15
latte	3,50
caramel cappuccinno	3,80
latte macchiato	3,50
hazelnut latte macchiato	4,25
caramel latte macchiato	4,05
hot choclata	3,25
hot chocolate + whipped cream	4,30
tea	2,80
forest fruit, earl grey, English breakfast, green tea (lemon, lemon-grass/ginger or jasmine), Morrocan mint, rooibos	
fresh mint tea	3,45
fresh ginger tea with lemon and/or orange	3,45

## *Liquor included!*

Irish coffee with whiskey	7,50
Italian coffee with Clevers amaretto-liqourette	7,50
French coffee with Grand Marnier	7,50

## **PASTRIES**

- warm apple pie | 3,50
- Luikse waffle | 3,25
- cheesecake 'New York style' | 3,95
- brownie pastry | 4,95
- arretjiescake | 3,25

## **EXTRAS WITH YOUR PASTRIES**

- ice cream | 2,00
- whipped cream | 1,10
- Nutella | 1,50
- warme cherries | 2,35
- fresh banana | 1,50
- fresh strawberries (in season) | 2,95
- warm vanilla sauce | 1,00
- warme chocolate sauce | 1,00

## **SAVOURY**

- toasti white ham/kaas | 4,50
- panini caprese tomato/mozzerella, vegetarian | 5,95
- panini chicken slightly spicy | 6,50
- sausage roll | 3,50

**OTHER  
TREATS**



## ALLERGENEN

ijs	gluten	ei	pinda	soja	melk	noten	sesam	sulfiet
Aardbei								
After Eight *	●	●		○	○	●		●
Banaan	○	○			●			○
Bloedsinaasappel *								
Bosbes								
Boterbabbelaar *	●	●			○			●
Bounty *	○	○		●	●			○
Chocolade	○	○		○	●			○
Citroen				○	○			○
Cookies	●	●	○	●	●	●	○	○
Cookies-karamel *	●	○	○	●	●	●		○
Crocantino	○	○	●	●	●	●	○	○
Dark cookies	●	○	○	●	●	○		○
Don Vito	○	●		●	●	○		○
Ferrero *	●	○		●	●	●		○
Frambozen								
Fruit passion *	○	○			●			○
Hazelnoot	○	○			●	●		○
Hazelnootpraliné	●	○	○	●	●	●		○
Kaneel	○	○			●			○
Karamel	○	○	○	●	●	○	○	○
Kinderchocolade *	○	○		●	●	○		○
Koffie	○	○		○	●			○
Koffiekaramel *	○	○		●	●	○		○
Kokos *	○	○			●			○

\* Dit zijn speciaalsmaken, deze wisselen.

## ALLERGENEN

● Bevat allergeen

○ Kan sporen bevatten

ijs	gluten	ei	pinda	soja	melk	noten	sesam	sulfiet
Lemon-cookies *	●	●		●	●			○
Limoncello *	○	○			●			○
Malaga	○	○			●		○	
Mango								
Passievrucht								
Pistache *	○	○			●	●		○
Roodfruit								
Smurfen	○	○			●		○	
Snickers *	○	○	●	●	●	●		○
Speculoos	●	○	○	●	●	○	○	○
Stracciatella	○	○		●	●	○		○
Stracciatellakaramel *	○	○		●	●			○
Truffel	○	○		●	●	●		○
Vanille	○	●			●			○
Walnoot	○	○	●	●	●	●		○
Witte chocolade-aardbei *	○	○			●			○
Witte chocolade-hazelnoot *	○	○			●			○
Witte chocolade-passievrucht *	○	○			●			○
Witte chocolade-pistache	●	○	○	●	●	○		○
Yoghurt	○	○		○	●			○
Yoghurtaardbei	○	○		○	●			○
Yoghurtabrikoos *	○	○		○	●			○
Yoghurtamarena *	○	○		○	●			●
Yoghurtbosvrucht	○	○		○	●			○
Yoghurtmandarijn *	○	○		○	●			○

Our sorbet ice cream contains no animal products. Also, all our ice cream contains no raw egg and no gelatine.



**IJSBAR NIJMEGEN-LINDENHOLT ●**

● **IJSSALON MILLINGEN AAN DE RIJN**

● **IJSSALON PLASMOLEN**

**IJSSALON OVERLOON ●**

**IJSSALON TIENRAY ●**

● **IJSSALON ARCEN**

**IJSSALON GRUBBENVORST ●**

● **IJSBAR VENLO**

**IJSSALON KESSEL ●**

*Nieuw!*

● **IJSSALON HEYTHUYSEN**

**IJSBAR ROERMOND ●**

● **IJSSALON THORN**

**IJSSALON EINIGHAUSEN ●**

Mochten Sie unsere Speisekarte auf Deutsch sehen?  
Scannen Sie den QR-Code.

---

Would you like to view our menu in English?  
Scan the QR code.

